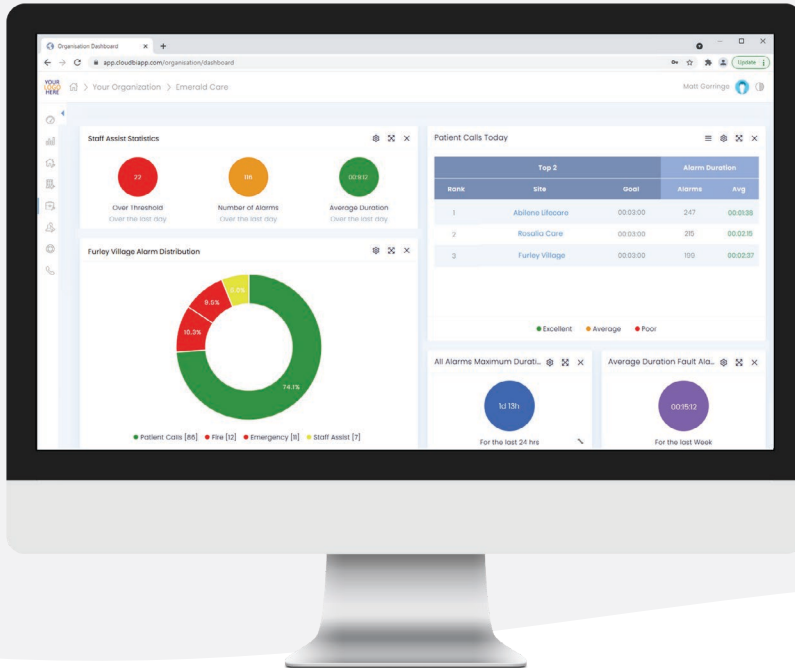


# EDGE CLOUD



Dashboard and reporting solution for your facilities.

## What can EDGE CLOUD offer your organisation?

EDGE CLOUD by Miracle provides enterprise level data warehousing for alarm, messaging and response data for your facilities.

Alarm data and response times can be aggregated, filtered, summarised then displayed on dashboards which provides you with instant, up to date information.

Centralised data allows trends and patterns to be identified to help drive decisions such as staffing levels and optimising personnel performance.

### Branding

Customise your portal for your corporate logo and colour.

### Reporting

The reporting module allows an overview and full data drill down into historic events, to give you the what, the where and the when of an event.

### Dashboards

The combination of near real-time and historic dashboards provides a valuable visual tool to monitor and drive changes.

The complete BI tool-set for your organisation.

## Flexibility

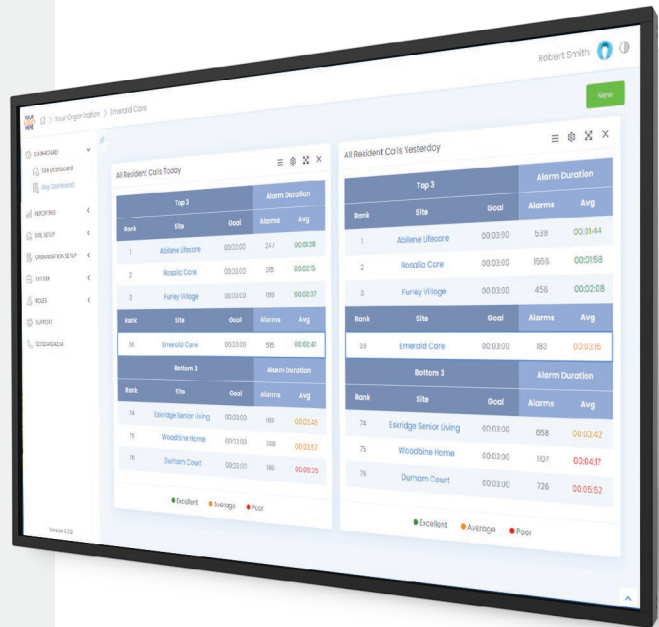
Create customised reports and dashboards for your organisation.

## Unlimited report combinations

Reports can be transformed into real-time graphical and tabular dashboards or select data emailed automatically to users.

## Accessibility

Built in, role based permissions system allows granular access to one site, multiple sites for each user.



All Resident Calls Today

Top 3			Alarm Duration	
Rank	Site	Goal	Alarms	Avg
1	Abilene Lifecare	00:03:00	247	00:01:38
2	Rosalina Care	00:03:00	215	00:02:15
3	Furley Village	00:03:00	199	00:02:37

Rank	Site	Goal	Alarms	Avg
38	Emerald Care	00:03:00	515	00:02:41

Bottom 3			Alarm Duration	
Rank	Site	Goal	Alarms	Avg
74	Eskridge Senior Living	00:03:00	199	00:03:48
75	Woodbine Home	00:03:00	308	00:03:57
76	Durham Court	00:03:00	165	00:06:05

● Excellent ● Average ● Poor

## Visualise change

Real-time data allows all users to view what is important to their role. Managers can action decisions and monitor improvement with real-time information.

## Leverage your investment

Each site installed with CareCall4 can be connected to web services in house or hosted in the cloud.

## IT dashboard

Also available is a purpose built health status dashboard to monitor all sites, communications and technical health.

Find out more at

[carecall4.com](https://www.carecall4.com)



**CARECALL**  
BY MIRACLE